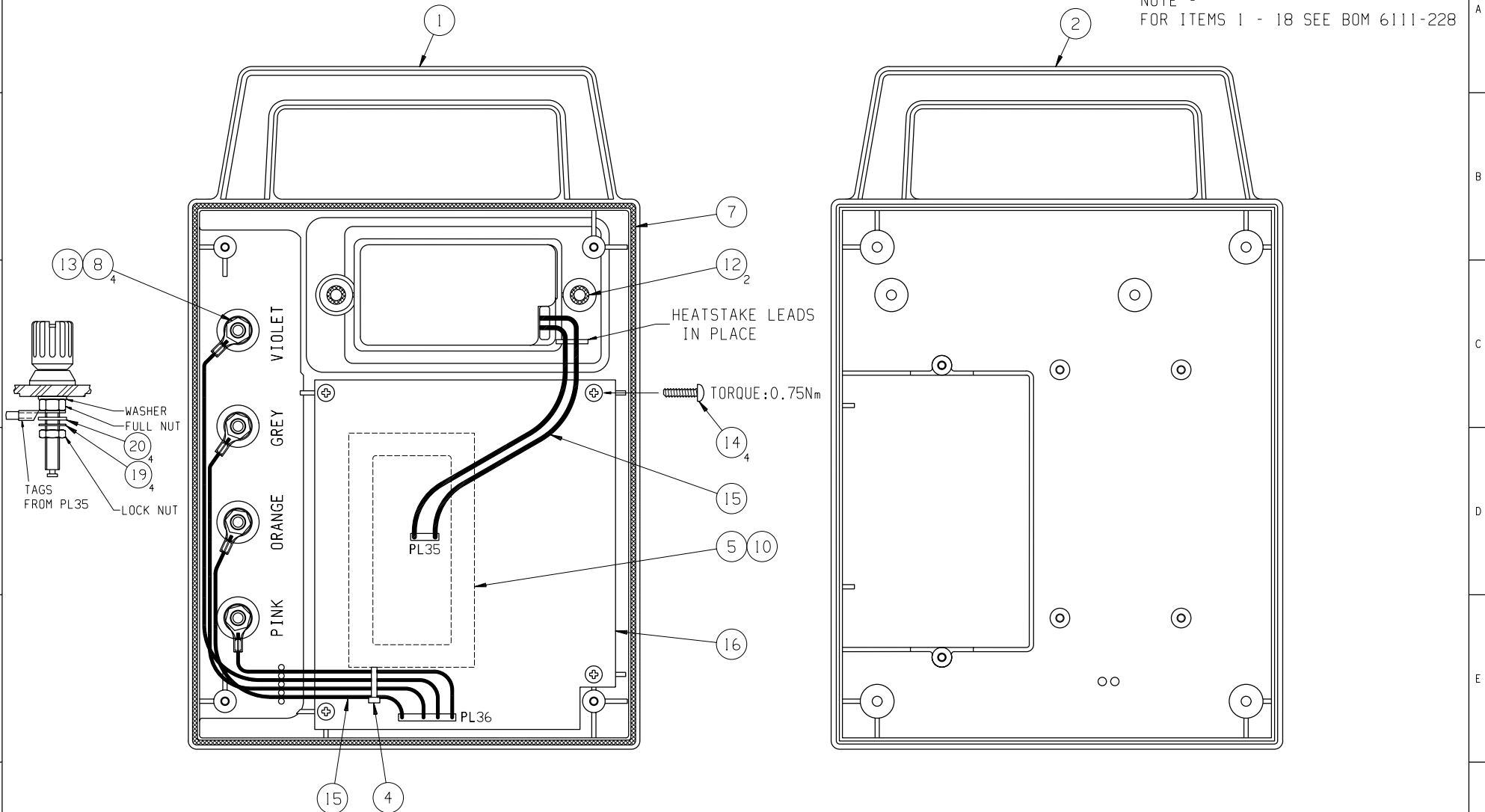
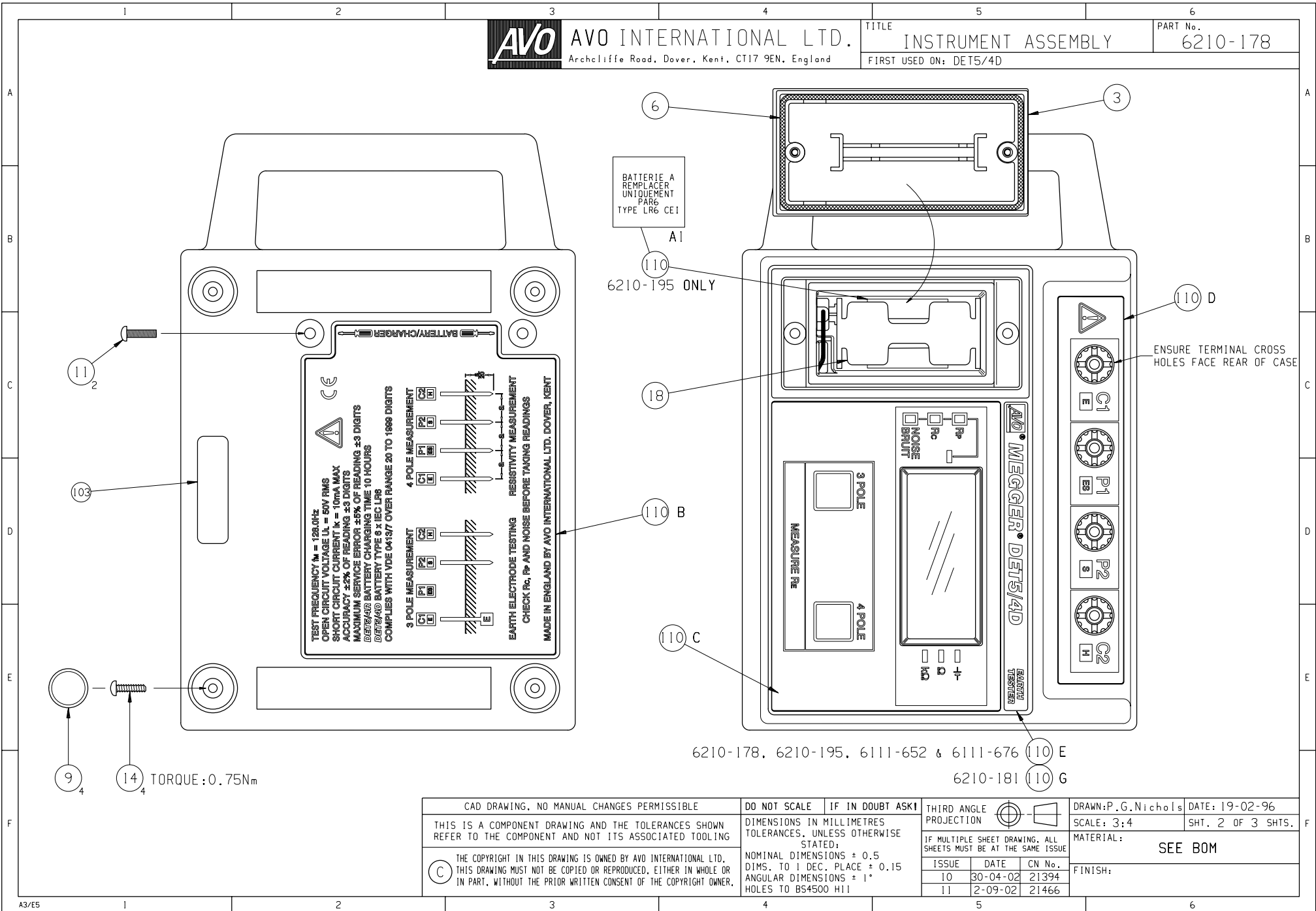


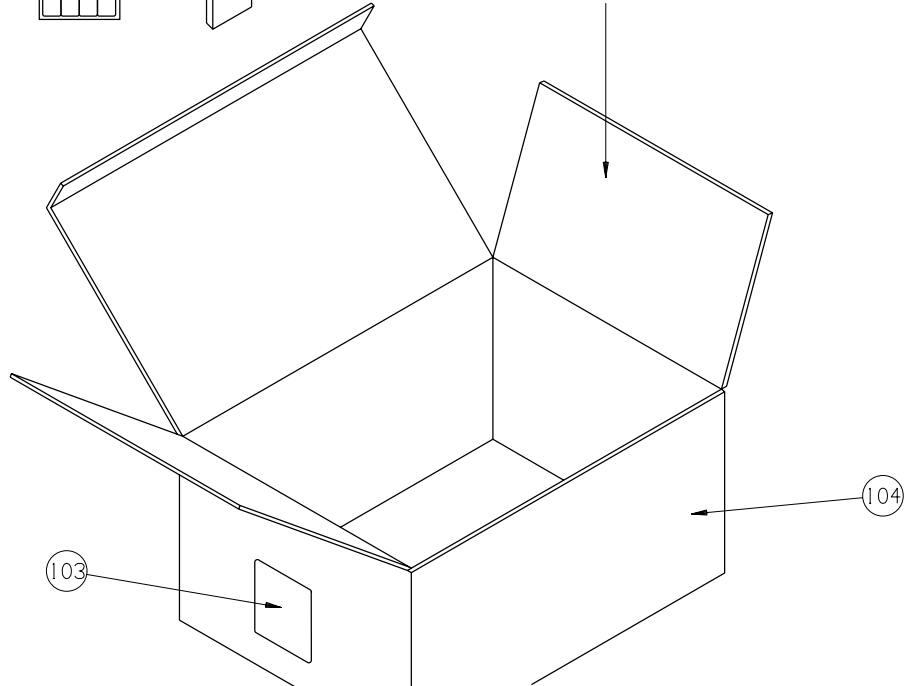
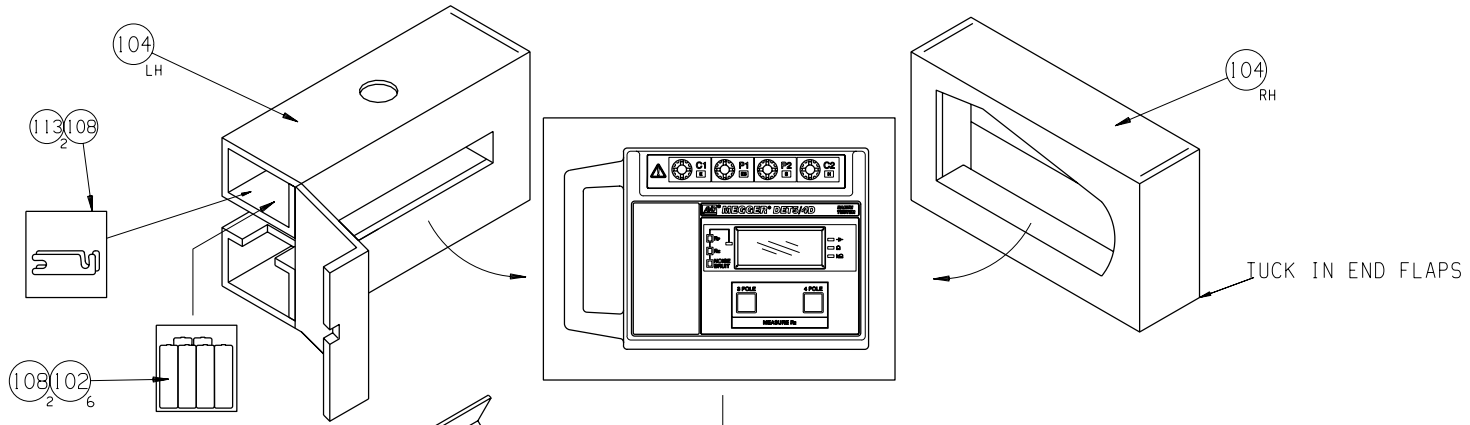
NOTE -  
FOR ITEMS 1 - 18 SEE BOM 6111-228



CAD DRAWING. NO MANUAL CHANGES PERMISSIBLE THIS IS A COMPONENT DRAWING AND THE TOLERANCES SHOWN REFER TO THE COMPONENT AND NOT ITS ASSOCIATED TOOLING THE COPYRIGHT IN THIS DRAWING IS OWNED BY AVO INTERNATIONAL LTD. THIS DRAWING MUST NOT BE COPIED OR REPRODUCED, EITHER IN WHOLE OR IN PART, WITHOUT THE PRIOR WRITTEN CONSENT OF THE COPYRIGHT OWNER.	DO NOT SCALE	IF IN DOUBT ASK!	THIRD ANGLE PROJECTION	DRAWN: P.G. Nichols	DATE: 19-02-96
	DIMENSIONS IN MILLIMETRES TOLERANCES, UNLESS OTHERWISE STATED:		IF MULTIPLE SHEET DRAWING, ALL SHEETS MUST BE AT THE SAME ISSUE ISSUE    DATE    CN No. 10    30-04-02    21394 11    2-09-02    21466	SCALE: 3:4	SHT. 1 OF 3 SHTS.
	NOMINAL DIMENSIONS ± 0.5 DIMS. TO 1 DEC. PLACE ± 0.15 ANGULAR DIMENSIONS ± 1° HOLES TO BS4500 H11			MATERIAL: SEE BOM	FINISH:



CAD DRAWING, NO MANUAL CHANGES PERMISSIBLE THIS IS A COMPONENT DRAWING AND THE TOLERANCES SHOWN REFER TO THE COMPONENT AND NOT ITS ASSOCIATED TOOLING THE COPYRIGHT IN THIS DRAWING IS OWNED BY AVO INTERNATIONAL LTD. THIS DRAWING MUST NOT BE COPIED OR REPRODUCED, EITHER IN WHOLE OR IN PART, WITHOUT THE PRIOR WRITTEN CONSENT OF THE COPYRIGHT OWNER.	DO NOT SCALE	IF IN DOUBT ASK	THIRD ANGLE PROJECTION	DRAWN: P.G. Nichols	DATE: 19-02-96
	DIMENSIONS IN MILLIMETRES TOLERANCES, UNLESS OTHERWISE STATED:		IF MULTIPLE SHEET DRAWING, ALL SHEETS MUST BE AT THE SAME ISSUE ISSUE    DATE    CN No. 10    30-04-02    21394 11    2-09-02    21466	SCALE: 3:4	SHT. 2 OF 3 SHTS.
	NOMINAL DIMENSIONS $\pm 0.5$ DIMS. TO 1 DEC. PLACE $\pm 0.15$ ANGULAR DIMENSIONS $\pm 1^\circ$ HOLES TO BS4500 H11			MATERIAL: SEE BOM	



NOTES

1. PUT INSTRUMENT INTO POLYTHENE BAG (ITEM 114), AND SECURE WITH SELLOTAPE ITEM 107. PLACE BATTERIES INTO POLYTHENE BAGS ITEM 108 & SECURE IN POSITION SO THAT THE BATTERIES CAN BE VIEWED THROUGH HOLE IN PACKING (ITEM 104). PLACE SHORTING LINKS IN POLYTHENE BAG ITEM 108 AND PLACE IN SAME COMPARTMENT AS BATTERIES.
2. FOR 6210-178, 6210-195, 6111-652 & 6111-676 PLACE USER GUIDE (ITEM 100), CERTIFICATE OF TEST (ITEM 112) AND WARRANTY CARD (ITEM 101) ON TOP OF INSTRUMENT.  
  
OR FOR RS VERSION 6210-181 PLACE USER GUIDE (ITEM 100), CERTIFICATE OF TEST (ITEM 112) AND WITH REPAIR QUESTIONNAIRE (ITEM 106) ON TOP OF INSTRUMENT.

CAD DRAWING, NO MANUAL CHANGES PERMISSIBLE  THIS IS A COMPONENT DRAWING AND THE TOLERANCES SHOWN REFER TO THE COMPONENT AND NOT ITS ASSOCIATED TOOLING  © THE COPYRIGHT IN THIS DRAWING IS OWNED BY AVO INTERNATIONAL LTD. THIS DRAWING MUST NOT BE COPIED OR REPRODUCED, EITHER IN WHOLE OR IN PART, WITHOUT THE PRIOR WRITTEN CONSENT OF THE COPYRIGHT OWNER.	DO NOT SCALE	IF IN DOUBT ASK!	THIRD ANGLE PROJECTION	DRAWN: P.G. Nichols	DATE: 19-02-96
	DIMENSIONS IN MILLIMETRES TOLERANCES, UNLESS OTHERWISE STATED:		IF MULTIPLE SHEET DRAWING, ALL SHEETS MUST BE AT THE SAME ISSUE ISSUE    DATE    CN No. 10    30-04-02    21394 11    2-09-02    21466	SCALE: 1:4	
	NOMINAL DIMENSIONS ± 0.5 DIMS. TO 1 DEC. PLACE ± 0.15 ANGULAR DIMENSIONS ± 1° HOLES TO BS4500 H11			MATERIAL: SEE BOM	
				FINISH:	