

FOR BT51 120V (6430-802) ONLY

WIRED AND TESTED FOR 120V

CHARGE

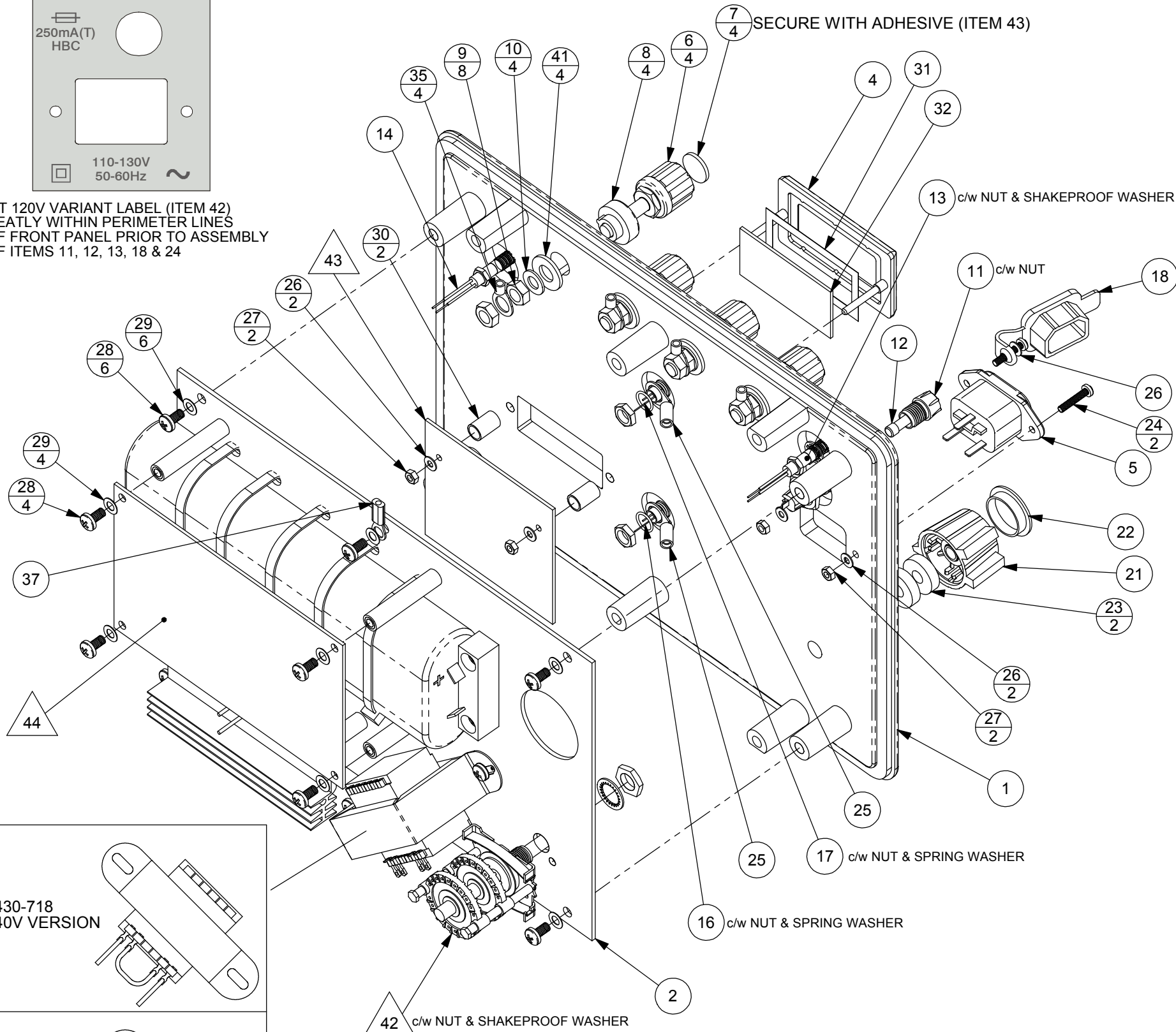
250mA(T)
HBC

110-130V
50-60Hz

FIT 120V VARIANT LABEL (ITEM 42)
NEATLY WITHIN PERIMETER LINES
OF FRONT PANEL PRIOR TO ASSEMBLY
OF ITEMS 11, 12, 13, 18 & 24

SECURE ALL FASTENINGS WITH LOCTITE ADHESIVE (ITEM 34)

SECURE WITH ADHESIVE (ITEM 43)



6430-718
240V VERSION

6430-802
120V VERSION

X TRIANGLE BUBBLE ITEMS CAN BE FOUND ON
CABLE FORM ASSEMBLY (ITEM 3)

Megger.

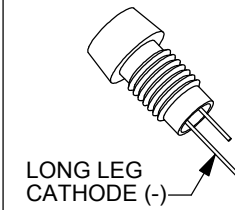
Title: **FRONT PANEL ASSEMBLY**

Part No.: **6430-718**

1st Used On: BT51

Scale: 1:1 Sheet 1 of 1

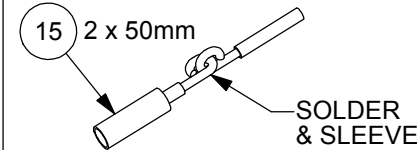
LED'S ITEMS 16 & 17



USE CLEAR SLEEVE (ITEM 19) TO
COVER LEG OF CATHODE (LONG)

USE VIOLET SLEEVE (ITEM 20) TO
COVER LEG OF ANODE (SHORT)

NEON CONNECTION ITEM 14



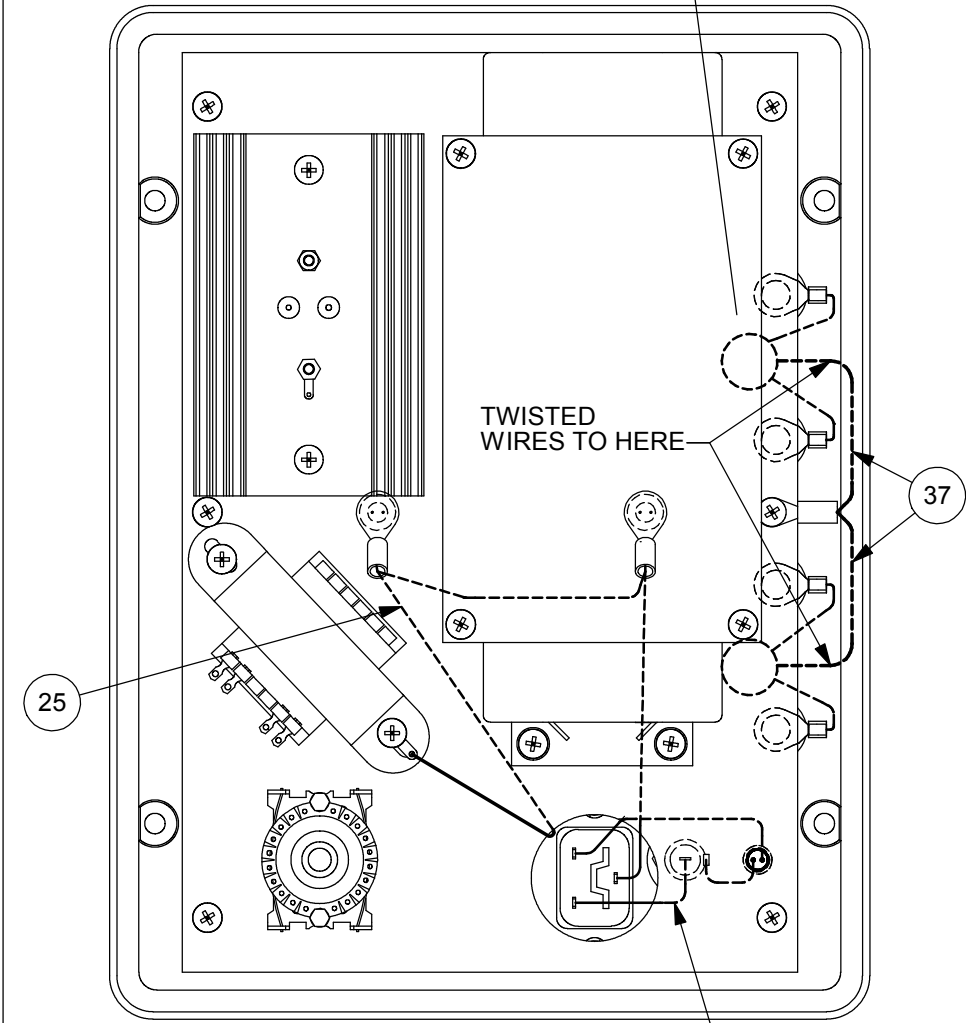
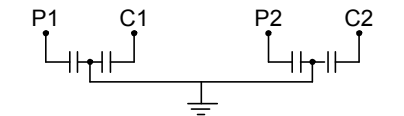
FOR BOTH NEONS (ITEM 14)
SECURE WIRES TOGETHER WITH
CABLE TIE (ITEM 42) AFTER
SOLDERING AND SLEEVING

CAPACITORS ITEM 38



SECURE CAPACITORS
TOGETHER AND TO PANEL
WITH ADHESIVE SEALANT
(ITEM 39)

TAKING A PAIR OF CAPACITORS (ITEM 38)
TWIST & SOLDER ONE LEG OF EACH
TOGETHER.
SOLDER ONTO TAGS AT POSITIONS
SHOWN BELOW



WIRING DETAILS

Megger Ltd. Archcliffe Road, Dover, Kent CT17 9EN, U.K.		THIRD ANGLE PROJECTION	Drawn By: A.Gilham	Date: 08/05/02
DO NOT SCALE	IF IN DOUBT, ASK!	DIMENSIONS IN MILLIMETRES	ISSUE	DATE
THIS IS A COMPONENT DRAWING AND THE TOLERANCES SHOWN REFER TO THE COMPONENT AND NOT ITS ASSOCIATED TOOLING.		TOLERANCES UNLESS STATED NOMINAL TO 1 DECIMAL PLACE	12	15/05/02
© MEGGER LIMITED Reproduction in whole or part without prior permission from the copyright owner is strictly prohibited		±0.5 ±0.15 ±1° HOLES TO BS4500 H11	13	20/03/03
		CN No.	21405	21655
		Material:	See BOM	
		Finish:		